

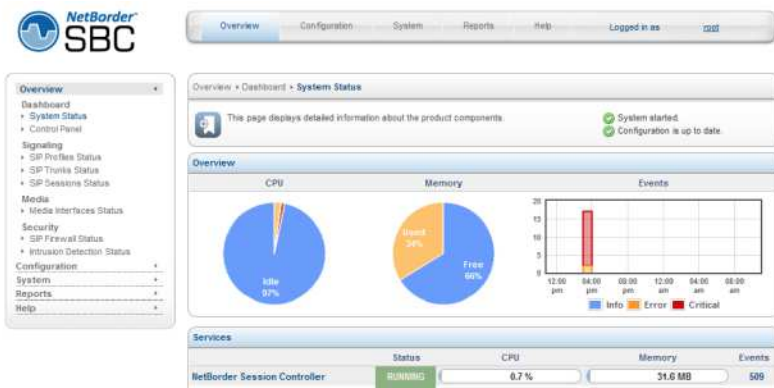
Management

Easy Web Interface

An SBC is complex, having requirements to understand security, routing, interop, profiles, trunking, remote phones, QoS and so much more. It is important to carriers, service providers, service integrators, resellers, distributors and end Users (basically everyone) that the usability of a complex device be at it's best.

The only way to achieve effective usability of a complex device is to create a Graphical User Interface (GUI) via a web administration, WebGUI. This interface organizes and constructs all the complex topics in a manner that allows people to easily understand the requirements and build a configuration that fits the solution they need quickly and efficiently.

The SBC leverages an exceptional WebGUI for administration, no Command Line Interface (CLI) needed for configuration. This allows anyone to take complex requirements and easily create a solution within the SBC through a WebGUI. The Sangoma WebGUI provides less training requirements, faster adoption of the technology, shorter installation time frames, faster resolution of problems and an overall successful experience.



Discover More

<http://sangoma.com/session-border-controllers/sbc-cheat-sheets/>