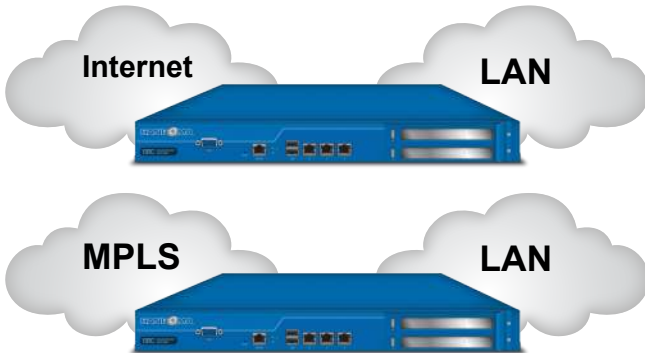


Deployments

Enterprise Edge

Place an SBC at the edge of two networks, one interface on the private LAN, and another on the Internet. Or place one interface on the private LAN and another on the carrier WAN. Create a control point where you can apply policies to provide solutions for security, routing, resiliency, interoperability, quality of service, access control, call admission control, authentication, failover, SLA management, encryption, troubleshooting and more.



The SBC is designed to sit on the network edge, between different networks, expanding the business communications ability to be flexible and resilient – no matter who is in the communication path. Thus, making the future of the business communications more about connectivity and less about delivery.



Discover More

<http://sangoma.com/session-border-controllers/sbc-cheat-sheets/>